

Glenridge Citation Roxy

→ A Queen with many Crown Princesses

Having a Roxy in the herd is a proud achievement for many breeders across the globe. How often have we heard “she is a Roxy” while looking at a great cow? Thanks to so many different fantastic branches of the Roxy family, Glenridge Citation Roxy EX-97 4E GMD 6* was the easy winner of both Queen of the Breed contests.

A cow with an illustrious career, Roxy was born in 1968 at the Glenridge Farm, Grenfell, Saskatchewan, before selling to Bob Miller, Mil-R-Mor Farm. Roxy was integrated into the Mil-R-Mor herd in the U.S. just before calving with her sixth calf, an Elevation daughter, Mil-R-Mor Roxette EX at the age of seven years and nine months. Roxette herself continued the legacy leaving many powerful, highly scored daughters. She became Canada’s first 30 star brood cow and scored 20 stars in the UK where she had many fans after leaving 11 of 22 daughters scored Excellent. Roxette moved first to Bond Haven, where she bred a Dixiecrat daughter, Bond Haven Dixie Rox who superseded her dam as an EX-93 2E 52* after moving to the UK. But it was at Hanoverhill where Mil-R-Mor Roxette bred no less than 30 daughters; leading to many of the different lines we see still succeeding in the breed today.

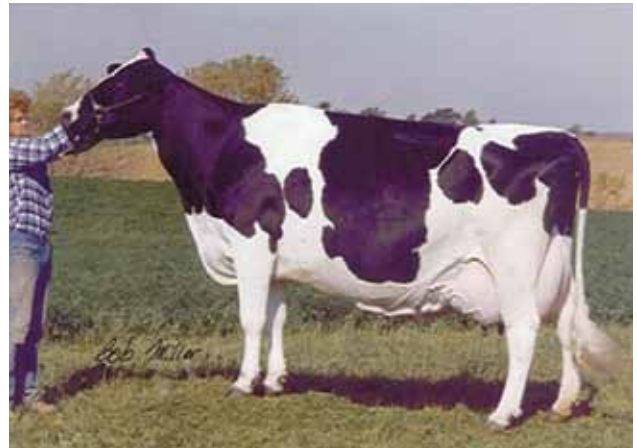
It was also at Hanoverhill that Roxette was mated to Starbuck resulting in Hanoverhill Raider, a very influential bull across Canada and the United States in the mid-1990’s. A full sister to Hanoverhill Raider is Hanover-Hill Star Roxy EX-92 2E. Star Roxy was twice nominated All-American and had four EX-94 offspring, three daughters and one son.

These days we see the Roxy’s all over the world with great results in the show ring, bulls hitting the top Genomic rankings and family members selling for sky-high prices at auctions. All out of different branches, which trace back to the one and only QUEEN; Roxy!

We all know about the great history of the Roxy from the past, lets have a closer look at the most interesting Roxy’s from the present!

Scientific Debutante Rae RC

The name Debutante Rae is one of the Roxy names to come up most often in recent years. Debutante Rae is one of those great Durham daughters that everybody likes to think stamped them out from the rest of the herd. She made a statement with her great type in 2005 when she was named Reserve Grand Champion of the International Holstein Show at World Dairy Expo. To further add to her type cred-



The Facts

- Queen of the Breed I & II
- Member of the All-American Produce of Dam '77, '78 & '79
- Member of the All-American & All Canadian Get of Sire '79
- 1st cow of the breed to have 10 Excellent dtrs
- International Cow of the Century 1999
- Dam of the 1st 30* STAR brood cow in Canada
- 7 of her EX daughters earned Gold Medal Status
- Dam of 16 EX daughters
- She has 3 descendents with 15 or more EX Dtrs! (Roxette 17, Lana Rae 15 & Integrity Robin 15)
- The only 4 Generation direct line group of cows with more than 11 EX dtrs: Roxy 16, Roxette 17, Dixie Rox 11, Bstar Roxie 12! Interesting note, each generation was in a different country!
- Highest production Roxy is Brigeen Convincer Rhonda EX-95, 66,320 lbs milk in 365 days
- Highest Classified Roxy female is C Hanoverhill Tony Rae EX-96
- Highest Classified Roxy male is Sir Ridgedal Rustler Red EX-97
- Roxy has more than 300 EXCELLENT descendents

its, she completed the seventh generation Excellent Roxy in a row. Thanks to her maternal grand sire, Meadolake Jubilant, Debutante Rae is also blessed with the Red Carrier gene which meant an extension of her popularity as a source of extremely interesting progeny for Red & White breeding. Her influence has been such that in 2010, Debutante Rae was named Holstein International’s ‘Red Impact Cow of the Year’, as voted by the readers.

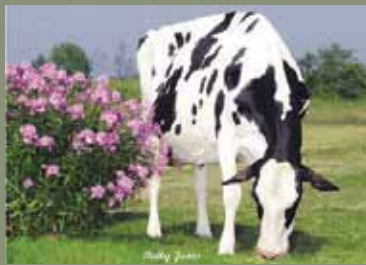
Now, after we have started to see her great offspring coming through the ranks, we can easily note that Debutante Rae will be a great Crown Princess for this family. The first cross on her was a 100% hit. Pursuit September Storm *RC was used and resulted in three females (EX-91,



Scientific Debutante Rae RC EX-92-USA
Res. Grand Champion WDE 2005. Bringing the great Roxy type together with skyhigh Genomics!



Stardale Leader Roxy EX-95-UK 7E
3 grand dtrs in the European Top Genomic Rankings



Brigean Integrity Robin EX-95-USA 2E
One of the highest scored Integrity dtrs in the breed



Gloryland Liberty Rae EX-95-USA
Liberty Rae sold for \$ 410,000

EX-90 and VG-87) and two bulls, named Scientific Deuce *RC EX-90 and Dusk *RC EX-94. Both sampled through Select Sires and succeeded in making a big impact with both still being in the U.S. TPI Top 20 and PTAT Top 10 for Red & Whit (12/10). This successful bull line looks like it will continue with great promise for the future with Scientific Debonair EX-90, sired by Talent and at Select Sires. Debonair has a PTAT of +2.55 and have been heavily used in Red & White show breeding.

Debutante's Goldwyn son, Scientific Destry *RC, is one of the most popular Genomic tested young sires of 2010. With GTPI +2127 and PTAT +3.02 (US 12/10) he is the highest bull available for Red & White breeding enthusiasts and can even compete with many of the Black & White bulls. His early progeny can already be found in the top ranking lists!

If we take the shortlist of Top Genomic Red or *RC females, we can also predict a great future for Debutante's successors, demonstrating the great maternal line transmitted through the generations and endorsed by the Rae's. Right at the top of the Dec. 2010 listing, we can see Debutante's Shottle daughter, Scientific Darling Rae *RC VG-2YR-USA with +2079 GTPI and +2.88 PTAT. She is followed by her Goldwyn sisters, Scientific Gold Dior Rae *RC VG-89-2YR-USA in fifth place, Scientific Gold Demi Rae *RC EX-90-USA in seventh place, Scientific Gold Doll Rae *RC VG-87-2YR-USA in 16th and Scientific Gold Dish Rae VG-87-2YR-USA in position 20 on this list! These are great index cows in addition to the awesome type Debutante stamps her daughters with and at last count, there were already 21 Very Good and five Excellent daughters in the U.S. to date!

Roxy's influence in the Red & White breed is actually quite extraordinary, spanning beyond the Debutante influence to an Astre son of Hanoverhill Star Royal, STBVQ Rubens. Known for siring many winning daughters on the colored shavings, Rubens was named Premier Sire of the Grand International Red & White Show for five straight years 2004-2008.

Roxy in Red

Another interesting Red Roxy is Golden-Oaks Perk Rae-Red-ET EX-90. Perk Rae is an eighth generation Excellent polled Roxy. This unique polled gene in combination with red and Roxy has made Perk Rae the cornerstone of the marketing program at Golden Oaks Farms. Perk Rae traces back to the Roxys through Scientific Beauty Rae-ET *RC EX-90 who is sired by Rubens, then Jubilant Rae and Tony Rae. Sired by Perk-Red, Perk Rae has numerous daughters worldwide and sons at ABS Global, ABC Genetics and Trans-World Genetics.

Stardale Leader Roxy EX-95 7E

One of the most popular brood cows in the U.K. right now was bred from an EX-91 2E Highlight Mr. Mark Cinder daughter of the imported Bond Haven Dixie Rox. Sharing extreme longevity with many of her predecessors, this Comestar Leader daughter has now produced over 100 tons of milk with her eighth lactation totaling almost 14,000 kgs in 305 days after a seventh lactation yield of 15,200 kgs at 5.27% fat and 3.29% protein for her current owners, the Willsbro herd. Leader Roxy has proven to be a solid investment. Purchased for 8,500gns at the 2006 Stardale Sale of the milking herd of Robert and

Top Ranking Genomic Roxy's around the World

FEMALES (All indexes are from December 2010)

Name	Sire stack	Index US 12/10	Ranking	Owner
Giessen Cinderella 20 VG-87 2yr.	Bolton x Shottle x Durham	GTPI +2054 PTAT +4.00	#1 PTAT Europe / #5 World Wide #7 GTPI Bolton in Europe	Diamond Genetics & JK Eder
Giessen Cinderella 22 VG-85 2yr.	Bolton x Shottle x Durham	GTPI +2145 PTAT +3.86	#1 GTPI Bolton dtr in Europe	Giessen Holsteins
Giessen Cinderella 38	Goldwyn x Cinderella 20	GTPI +2054 / PTAT +4.24	#3 GTPI Heifer Europe	Giessen Holsteins
Shottle Rhonda 1	Goldwyn x Shottle x Convincer	GTPI +2034 / PTAT +3.49	#20 GTPI Goldwyn in Europe	G. Pakkert
Willsbro Garret Roxy	Garret x Shottle x Starleader	GTPI +2246 / NM \$ 740	#12 GTPI Heifer & #7 NM Europe #2 GTPI Garret World Wide	Willsbro Holsteins
De Rith Simone	Man-O-Man x Goldwyn x Durham	GTPI +2188 / PTAT +1.68	#29 GTPI Heifer Europe	De Rith Holsteins
Willsbro Shottle G Roxy	Shottle x Goldwyn x Starleader	GTPI +2126 / PTAT +2.61	#12 GTPI Shottle in Europe	Willsbro Holsteins
Dulais Goldwyn Roxy	Goldwyn x Shottle x Starleader	GTPI +2141 / PTAT +3.40	#3 GTPI Goldwyn in Europe	Dulais Holsteins
Scientific Darla Rae VG-87 2yr.	Shottle x Durham x Jubilant	GTPI +2048 / PTAT +4.08	#4 PTAT Cow World Wide	Scientific Holsteins
Scientific Blessing Rae VG-86 2yr.	Shottle x Durham x Jubilant	GTPI +1947 / PTAT +3.65	#14 PTAT Cow USA	Scientific Holsteins
Scientific Gold Dior Rae RC VG-89	Goldwyn x Durham x Jubilant	GTPI +2011 / PTAT +3.51	#1 RC PTAT Cow USA #5 GTPI Cow USA (R&W)	Scientific Holsteins
Scientific Gold Doll Rae RC VG-87	Goldwyn x Durham x Jubilant	GTPI +1908 / PTAT +3.42	#2 RC PTAT Cow USA #9 GTPI cow USA (R&W)	Scientific Holsteins
Scientific Darling Rae RC VG-85 2yr.	Shottle x Durham x Jubilant	GTPI +2079 / PTAT +2.88	#1 GTPI cow USA (R&W)	Scientific Holsteins
Scientific Gold Demi Rae RC EX-90	Goldwyn x Durham x Jubilant	GTPI +1997 / PTAT +2.94	#6 GTPI cow USA (R&W)	Neil Mc. Donah
Scientific Gold Dish Rae RC VG-88	Goldwyn x Shottle x Jubilant	GTPI +1892 / PTAT +2.57	#9 GTPI cow USA (R&W)	Todd T. Stanek



R Peter Heffering (Hanoverhill Holsteins) about the Roxy's

Getting into the family

"We felt that Roxy was one of the breed's great cows and probably the best daughter of Citation R. Elevation was making a lot of good offspring, so when the Elevation heifer was coming up for sale on the National Convention Sale we bought her as a foundation female for the herd. Roxette flushed well and turned out to be one of the strongest transmitting daughters of Roxy."

Which branch of the Roxy's do you think is the best

"It is really difficult to answer that question without digging out the sale catalogs and doing some checking. Many breeders have had great success with the Roxy's. Look at Matt Nunes with the Tony Rae's and the dollars that cow has generated for him and the cattle that he has continue to be in demand. The addition of the Red Factor has really added another plus to the family. David Tait's Gloryland, the herd is nearly all Roxy's and Liberty Rae has that sweet Goldwyn daughter at Gillette's and Doug Nelson has some nice heifers coming from her. Look at what Briggs have been able to generate from the Integrity Robin cow. They produce the kind of cattle breeders want."

"The most important thing is that the Roxy's have produced quality cattle over a lot of years. This enabled the breeders to develop branches of the Roxy's in their own breeding program. The family gave them great cattle within their herds to work with and generate dollars in the sale of offspring and embryos in many countries around the globe. I think that is what makes them stronger today than they have ever been."



James Burrow, she has to date bred 16 daughters, 13 of which hold the Willsbro prefix, and her nine classified daughters have all scored Very Good or Excellent.

Willsbro sold her VG-87-2YR Shottle heifer (one of five classified Shottle daughters – all VG) at their headline sale in 2010 who was bought back by the Burrow family for 12,000gns. She is now due to calve with second calf, by Gillette Jordan in April. Another Shottle dtr is the the mother of Willsbro Garrett Roxy (U.S. 12/10 GTPI +2246), Europe's #12 GTPI Heifer.

Gloryland Liberty Rae EX-95-USA

Another cow stamped with the Roxy mold of longevity and productivity and another successful Durham, Gloryland Liberty Rae EX-95 3E DOM. Gloryland Holsteins is yet another herd to benefit from this bloodline and Gloryland Liberty Rae is one of 15 Excellent daughters

all with Excellent mammary systems from Gloryland Lana Rae, completing eight generations straight Excellent. An EX-94 2E DOM Rudolph daughter, Lana Rae came to David Tait's Virginia based herd via another cow bearing the Scientific prefix, Scientific Liza Rae EX, by Townson Lindy.

After claiming Honorable Mention All-American Four-Year-Old in 2005, Liberty Rae was sold for \$410,000 in the 2008 Cowtown Sale. She went on to win first aged cow, best udder, senior and grand champion at the 2009 Vermont State Show and has already achieved Star Brood status. Despite selling this herd star, a large proportion of the Gloryland herd is still made up from this impressive, alternative line of Roxy's, which is still attracting many admirers.

Today, this line continues beyond Liberty Rae to her VG-89 Goldwyn daughter, Libertyrae Goldielocks-ET owned by Gillette Farms and another VG Goldwyn daughter being developed at Morsan Farms.

Bob Miller (Mil-R-Mor Holsteins)

"One interesting statistic of Roxy is that she is the only cow in the breed that I am aware of that has founded a four generation line of females that have produced over 11 Excellent offspring each and in four different countries. In the US you have Roxy with 16 Excellent daughters her daughter in Canada is Roxette with 17 Excellent daughters and in turn her daughter in England is Bond Haven Dixie Rox with 11 Excellent daughters and in Ireland you have Dixie Rox's daughter, Joylan Blackstar Roxie with 12 Excellent daughters."

"I always say that type brought her fame, but production was her game. Production in the family has been as exceptional. I think the highest production record in the family is around 66,000 lbs. of milk several in the 50,000 lb. level and many in the 40,000 lb. mark. At one time we took a picture in the pasture of seven Roxys that were Excellent with Excellent mammary systems and they averaged 43,000 lbs. of milk with over 1700 lbs. of fat."

"No matter how far out from the old Roxy you go the imprint of her tremendous type still comes through. Here at Mil-R-Mor we have had seven Excellent-94 point Roxy's. There are now around 300 Excellent descendants of Roxy that trace back in an unbroken direct Excellent line to Roxy."

Brigeen-C Integrit Robin EX-95

One of the highest scoring Integrity daughters worldwide, Brigeen-C Integrit Robin was bred from Haselmer Prelude Rhoda EX-91 3E. Rhoda descends from Brigeen Southwind Rhonda VG-88 2* via Mil-R-Mor SWD Rockette VG-86 who in turn is out of Mil-R-Mor Toprox 3E-94 the highest classified and production daughter of Roxy. This alternative sire stack obviously appealed to AI studs and Robin was used as a successful bull dam with Emory son, Brigeen Riley used extensively around the world in the early 2000's and her two Durham sons, Dirigo-Conant Reeves and the German bred Duty marketed more recently. Duty received his first crop proof in 2010, and with impressive type figures, he will be another sire to watch for in the show rings.

Perhaps her best descendents to date have been her Emory daughter Brigeen Emory Raisa EX-92 who bred the EX-95 2E Convincer Rhonda, securing the future of the 'Rhonda' line with progeny across the globe. Convincer Rhonda is also the highest production Roxy in the world with a top record of 4-10 2x 365d 66,420M 4.3% 2839F 2.9% 1943P. One of the highest top heifers from this branch of the family is Goldwyn Rhonda 1 from G. Pakkert (NL). She is the #20 GTPI Goldwyn and Top 25 PTAT heifer in Europe (GTPI +2034 / PTAT +3.59) She is out of the fantastic Loford Shottle Rhonda VG-89-UK!

Giessen Cinderella VG-89-NLD

For the people who have followed the past year's Top Genomic lists; the name of Cinderella should ring a bell. Bringing the family bang up-to-date, the foundation of this Dutch branch can be identified as Giessen Cinderella VG-89-USA, also sired by Regancrest Elton Durham and going back two generations via Wilcoxview Cinderella EX-92 2E. She was sired by Marcrest Encore and her dam was Scientific Cinderella VG-88, sired by Mr. Mark Cinder and again back to the great Hanoverhill Tony Rae EX-96-USA 3E GMD DOM (another daughter of Roxette) who is also the grand dam of the before mentioned Debutante Rae.

Durham Cinderella has done a great job in the Giessen herd with many fantastic descendents already. It's her Shottle daughter, Giessen Cinderella 15 VG-89; however, who has attracted a serious amount of international interest recently. At the National HHH-Show in 2009, she won the Reserve Intermediate Championship and shortly after that, she put the Cinderella name on the map with sky-high Genomic indexes identified. Cinderella 15 still has a US 12/10 GTPI +1900 and PTAT +3.39 score which keeps her in the PTAT top ranking Shottle daughters in Europe. The way she transmits is even more impressive with the most well known, her two daughters by Sandy-Valley Bolton; Giessen Cinderella 20 VG-87 89-MS at 2Y and her full sister Cinderella 22 VG-85-2YR. The first mentioned, Cinderella 20 VG-87-2YR, now owned by Diamond Genetics and JK Eder Holsteins, and is still the #1 PTAT cow in Europe with US 12/10 PTAT +4.00 and completing the total package with GTPI +2054. A popular donor dam, embryos from her have been exported already to breeders and AI stations all around the world. Cinderella 20's own Goldwyn daughter seems to continue this line with a PTAT of +4.24 which makes her the #2 PTAT heifer in Europe and #16 worldwide!

Full sister Giessen Cinderella 22 VG-2YR, who is still owned by her breeder Giessen Holsteins, is the world's #7 GTPI Bolton daughter with GTPI +2145!

Giessen Cinderella 17 EX-90 is a Goldwyn x Durham Cinderella cross and is one of the very best Goldwyn daughters in the Netherlands. Her son De Rith AltaShare GTPI and MOM daughter De Rith Simone are her progeny that perform well in the Genomic rankings with GTPI's of +2058 and +2188 (PTAT +1.68) respectively.

A great source for the R&W breed is Giessen Cinderella 29 VG-86 89-MS at 2Y, owned by Diamond Genetics and Nosbisch Holsteins. This *RC Cinderella is among the top global Genomic scores for Red or *RC with US 12/10 GTPI +1730 and PTAT +2.26, she increased no

The Nunes family (Scientific Holsteins)



Scientific Holsteins got their start in the Roxy family when Matt fell in love with Roxy herself.

"Roxy was the complete package – type, production, high components and longevity." After following the family, Matt purchased her great-granddaughter Hanoverhill Tony Rae as a yearling heifer in 1987. This complete package reputation has held true for the many generations at Scientific Holsteins as they try to breed for the next great cow.

"High components have transmitted well in the Roxy family and now with more management traits in the index formula we just happened to start having individuals come up high on some of the lists. We were always striving to breed good cows with the complete package and naturally their genetics found their way on the top lists."

"All in all we are just trying to breed really good cows that will make us money as dairy farmers and Debutante Rae and her offspring have helped us achieve this and provide a little fun along the way."

less than 354 GTPI, +1.43 PTAT and 194 points for Net Merit in her Genomic test! She has a great alternative bloodline for Red & White breeding programs with, in succession, Mr. Burns, Laudan and Durham and she is among the highest producing two-year-olds in her herd ever, with a projected first lactation of: 2-04 305d 10.61kgM 4.03%F 3.62%P LV 134.

A truly global phenomenon now with well over 300 Excellent scored descendents: Glenridge Citation Roxy has touched every corner of the Holstein world, bringing style, power and longevity to the breed – a real cowman's favorite with show style to boot. Long Live the Queen!

We hope you enjoyed this Roxy feature and understand that with over 300 Excellent descendents scattered across many lines it was impossible to include all the great Roxys. However, we do want to hear about your Roxy and the impact this great bloodlines has had on your herd. To follow up this feature we will be highlighting some of your Roxy stories on Holstein Plaza. Please use the contact us link at www.holsteinplaza.com or www.eurogenes.com to share your Roxy story.



Giessen Cinderella 20 VG-87 2yr.
+4.0 for PTAT! #1 PTAT cow in Europe and #5 World Wide!!



Scientific Gold Dish Rae TV RC VG-88 2yr.
The only TV and RC Goldwyn dtr of Debutante Rae. Dish Rae is the #9 GTPI cow for the R&W breed



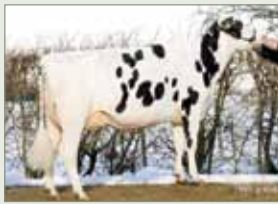
Giessen Cinderella 17 EX-90
High Genomics & Excellent Show Type



Golden-Oaks Perk Rae Red EX-90-USA
The 8th generation EXCELLENT R&W and Polled Roxy!

ROXY FAMILY SCHEDULE

On these pages you will find the Roxy family schedule. As the Roxy family is so extremely vast and had so much impact on the breed, there are just not enough pages in this magazine to mention all the great Roxys of the breed. The Roxys, which are mentioned in the article, are described in this family schedule.



♀ **Giessen Cinderella 20 VG-87 2yr.**
(s. Sandy-Valley Bolton)



♀ **Giessen Cinderella 22 VG-85 2yr.**
(s. Sandy-Valley Bolton)



♀ **Giessen Cinderella 29 RC VG-86**
(s. Dudoc Mr. Burns)



♀ **Mii-R-Mor Roxette EX-CAN**
(s. Round-Oak Rag Apple Elevation)



♀ **Giessen Cinderella 15 VG-89**
(s. Picston Shottle)

♀ **Giessen Cinderella 5 VG-85**
(s. Laudan)

♀ **Giessen Cinderella VG-89-USA**
(s. Regancrest Elton Durham)

♀ **Giessen Cinderella 17 EX-90**
(s. Braedale Goldwyn)

♀ **Wilcoxview Cinderella EX-92-USA**
(s. Marcrest Encore)



♀ **Golden-Oaks Perk Rae Red PL EX-91**
(s. Burkett-Falls Per Red)

♀ **Scientific Cinderella VG-88-USA**
(s. Highlight Mr. Mark Cinder)



♀ **Hanoverhill TT Roxette EX-94-USA**
(s. Hanover-Hill Triple Threat)

♀ **Hanoverhill Tony Rae EX-96-USA**
(s. Marshfield Elevation Tony)

♀ **Scientific Jubilant Rae EX-90-USA**
(s. Meadolake Jubilant)



Glenridge Citation Roxy EX-97-USA
(Citation R x EX-90-USA Model Far)

♀ **Scientific Beauty Rae EX-90-USA**
(s. STBVQ Rubens)

♀ **Scientific Liza Rae EX-90-USA**
(s. Townson Lindy)

♀ **Scientific Debutante Rae RC EX-92-USA**
(s. Regancrest Elton Durham)

♀ **Scientific Gold Dish Rae RC VG-88-USA 2yr.**
(s. Braedale Goldwyn)

♀ **Early-Autumn Golden Rae RC EX-92**
(s. Braedale Goldwyn)

♀ **Gloryland Lane Rae EX-94-USA**
(s. Startmore Rudolph)



♀ **Scientific Gold Demi Rae RC EX-90-USA**
(s. Braedale Goldwyn)

♀ **Scientific Gold Doll Rae RC VG-87-USA 2yr.**
(s. Braedale Goldwyn)



♀ **Morningview Pronto C Rae VG-87**
(s. Windy-Knoll-View Pronto)

♀ **Gloryland Liberty Rae EX-95-USA**
(s. Regancrest Elton Durham)



♀ **Scientific Scientific Gold Dior Rae RC VG-89 2yr.**
(s. Braedale Goldwyn)

♀ **Scientific Darling Rae RC VG-85-USA 2yr.**
(s. Picston Shottle)

♀ **Scientific Darla Rae VG-87-USA 2yr.**
(s. Picston Shottle)

♀ **Scientific Blessing Rae RC VG-86-USA 2yr.**
(s. Picston Shottle)

♀ **Scientific SS Dede VG-87-USA 2yr.**
(s. Pursuit September Storm)

♀ **Scientific Roy Delicate EX-91-USA**
(s. Roylane Jordan)

♀ **Scientific SS Destiny EX-91-USA**
(s. Pursuit September Storm)

♀ **Scientific SS Debut Red EX-90-USA**
(s. Pursuit September Storm)

♀ **Scientific Deco Rae Red VG-87-USA**
(s. KHW Kite Advent)

♀ **Scientific Deja Vu Rae RC VG-87-USA 2yr.**
(s. Ladino-Park Talent)

♀ **Libertyraes Goldielocks VG-89-CAN**
(s. Braedale Goldwyn)



Her sons

♂ **Scientific Destry RC**
(s. Braedale Goldwyn)



♂ **Scientific SS Deuce Red**
(s. Scientific September Storm)

♂ **Scientific SS Dusk Red**
(s. Scientific September Storm)

♂ **Scientific Debonair Red**
(s. Ladino-Park Talent)

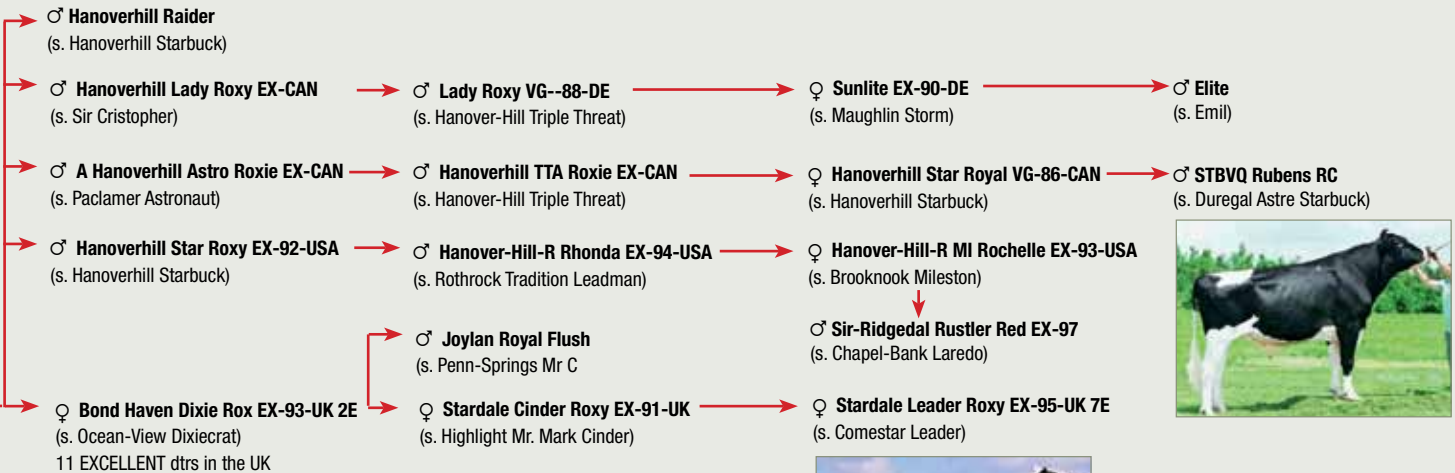
♂ **Scientific Demello RC**
(s. Picston Shottle)



♀ **Morningview Baxter D Rae VG-86**
(s. Emerald-Acr-SA T Baxter)



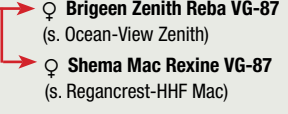
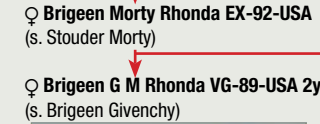
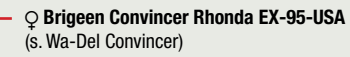
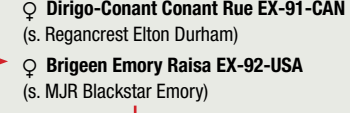
3 EXCELLENT dtrs by Sept. Storm (2x) & Starbuck



SA 4E GMD
the x VG-USA Sovereign)



♀ 8 VG & 1 EX dtrs to Date by Jed, Manat, Mr. Same, Shottle & Goldwyn



♀ **Brigeen Mac GM Rhonda VG-86 2yr.**
 (s. Regancrest-HHF Mac)

♂ **Our-Favorite Detox RC, Duhlux RC & Dallas RC** (s. Picston Shottle)



♀ **Scientific Demi Rae EX-90-USA**
 (s. Far-O-La Debbe Jo Drake)

♀ **Anderstrup Debut Rae Red VG-FR**
 (s. KHW Kite Advent)

