



Hurtgenlea Richard CHARL

Dominating the RANKINGS

Hurtgenlea Richard CHARL

(DG Charley x Hurtgenlea Yoder Modesto VG-86-USA 2yr.)

Net Merit \$ 1075

#2 Net Merit bull in the breed (>12 months)

The #1 with semen in Europe!!

GTPI +2920

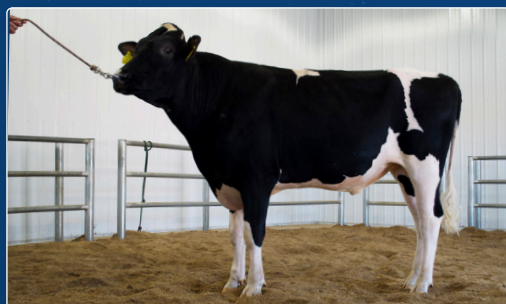
#4 GTPI bull in the breed (>12 months)

The #1 with semen in Europe!!

ONLY bull in the breed:

combining >2920 GTPI / >1075 \$ NM & <7 SCE

A2A2



12/2018	CDCB SUMMARY - GENOMIC			NM\$ +1075
Milk	+1945	76%R	Fluid Merit \$	+1045
Fat	+112	+0.14%	Cheese Merit \$	+1091
Protein	+65	+0.02%	Grazing Merit \$	+1062
SCS	2.79	74%R	Gestation Len. -3	Fert. Index +4.3
PL	+7.3	72%R	Livability +2.5	66% Rel
DPR	+3.8	71%R	EFI 8.3%	gEFI 9.1%
HCR	+4.3			
CCR	+6.3		0 Dtrs 0 Herds	100% US

12/2018	CALVING SUMMARY		SCE 6.1 %
Sire Calving Ease	6.1%	62%R	0 Obs
Daughter Calving Ease	2.6%	56%R	0 Obs
Sire Stillbirth	6.4%	58%R	0 Obs
Daughter Stillbirth	3.5%	53%R	0 Obs

12/2018	HA TYPE SUMMARY				TPI +2920		
PTAT +1.56	74%R	UDC+1.68	FLC+0.50	BSC -1.03	0 D / 0 H		
			-2	-1	0	1	2
Stature	+0.67	Tall					
Strength	-0.60	Frail					
Body Depth	-0.27	Shallow					
Dairy Form	+1.68	Open Rib					
Rump Angle	+0.71	Sloped					
Thurl Width	+0.32	Wide					
Rear Legs-Side View	+0.08	Sickle					
Rear Legs-Rear View	+0.39	Straight					
Foot Angle	+0.00	Steep					
Feet & Legs Score	+0.70	High					
F. Udder Attachment	+2.01	Strong					
Rear Udder Height	+2.50	High					
Rear Udder Width	+2.30	Wide					
Udder Cleft	+0.06	Strong					
Udder Depth	+1.52	Shallow					
Front Teat Placement	+0.69	Close					
Rear Teat Placement	+0.41	Close					
Teat Length	-1.49	Short					



UNIQUE OPPORTUNITY...

...Knocks for European breeder to get acces to his exclusive genes!

CHARL TRANSMITS...

Most sons in the young sire GTPI Top 25: 7 ALREADY and still counting!!

5 genomics tested progeny & pregnancies >3000 GTPI already!!

Bull with most tested progeny >1000 Net Merit already!

Already 9 progeny & pregnancies >1100 Net Merit until date!

Diamond Genetics has CHARL semen available for European breeders under special conditions.

Contact us for more information.

General
Europe
Europe
Germany
France
Europe

Jan de Vries +31 (0)6 26250502
Arjan van der Vlis +31 (0)6 43985150
Jan Postma +31(0)6 42778550
Cristoph Lüpschen +49 (0) 15112121766
Jan van den Oord +33 679961625
Hendrik Albada +1 240-520-1566

jdvrries@diamond-genetics.nl
avdvlis@eurogenes.nl
jpostma@diamond-genetics.nl
christoph.luepschen@t-online.de
jan.vdo@diamond-genetics.fr
hendrik.albada@holsteinplaza.com